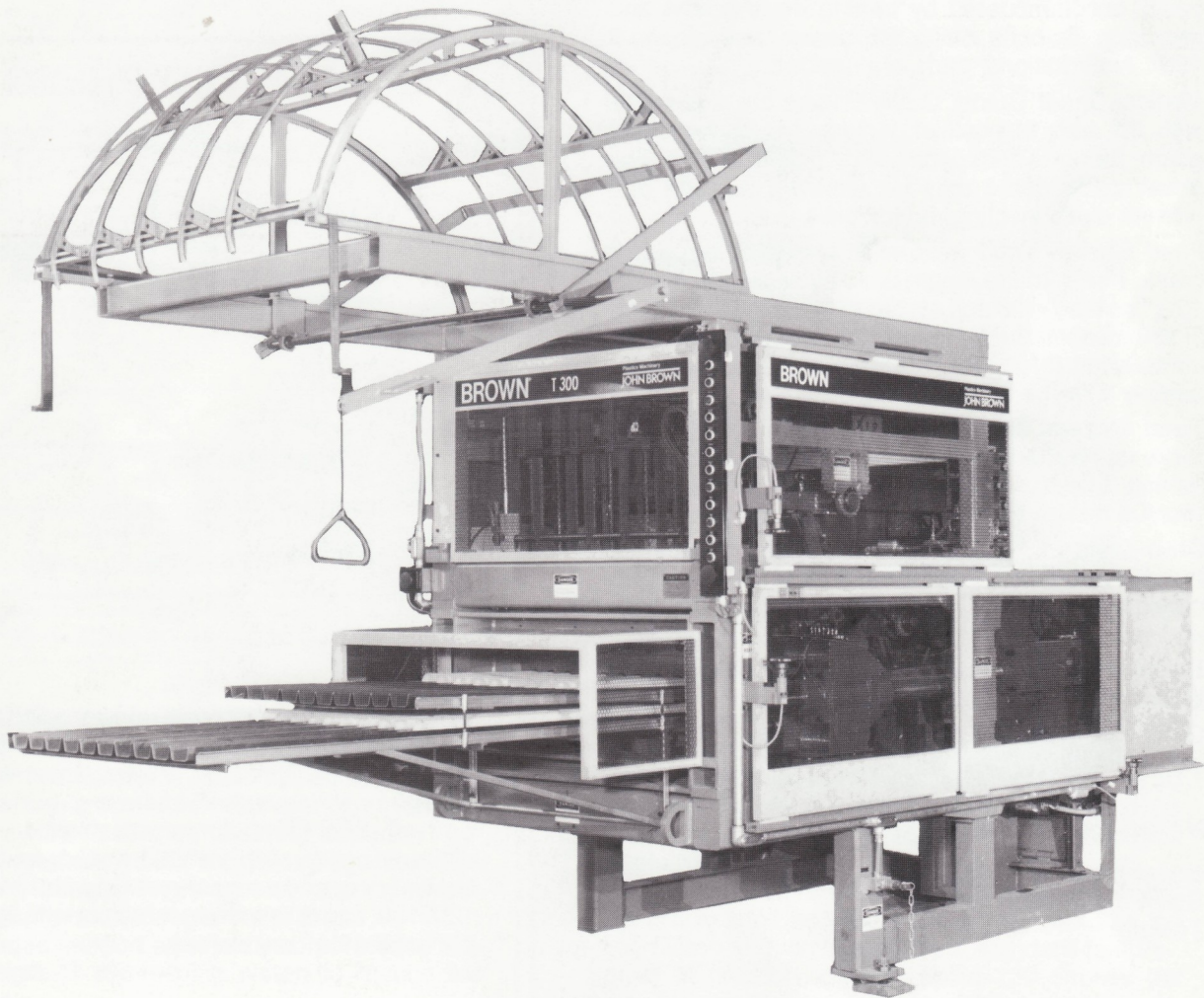


BROWN[®]

Plastics Machinery

JOHN BROWN

T-SERIES High Speed Trim Presses



T-SERIES HIGH SPEED TRIM PRESS

The Brown® T-Series is a line of trim presses designed for use with high-speed continuous thermoforming equipment. Incorporating variable speed, adjustable feed and stroke features, these units are electro-mechanically synchronized with the output of the thermoforming machine. Trimmed parts are automatically nested, ready for packing or delivery to subsequent processing operations.

Standard Features

- Automatic Lubrication
- Sheet Threading Device. A newly designed sheet threading device has dramatically reduced the effort needed to feed the web into the trim press. Sheet threading is additionally aided by the use of an operator catwalk.
- Canopy. Both standard and reverse trim positions are easily accommodated by turning the machine and removing six bolts, lifting the canopy and turning it 180°. No additional parts are needed.
- Vertical Sheet Guide. Guide fingers are adjustable with the web in position. Adjustment of the sheet guide frame is independent of platen stroke. The sheet guide frame may be removed (up and out) without disconnecting motion linkage.
- Feed Stroke. Feed pattern is controlled by a bell crank. Feed Stroke length is adjustable from 4½" to 10½" on the T-100 and 4½" to 16½" on the T-300 and T-350 models. Stroke length adjustment is easily accomplished through a threaded rod and T-bolt assembly with the wrench included.
- Feed System. Bell crank driven. The use of taper locks rather than roll pins simplifies feed finger positioning. Linkage to the moving platen provides harmonious motion to feed guides.
- Drive Systems. An eddy current drive unit is mounted in a horizontal position at the rear of the machine, providing convenient access for routine maintenance and two speed control.
- Externally mounted belt tensioning feature allows adjustments to be made using a wrench.
- Parts Pan. A horizontal tray which allows the parts to be automatically nested.

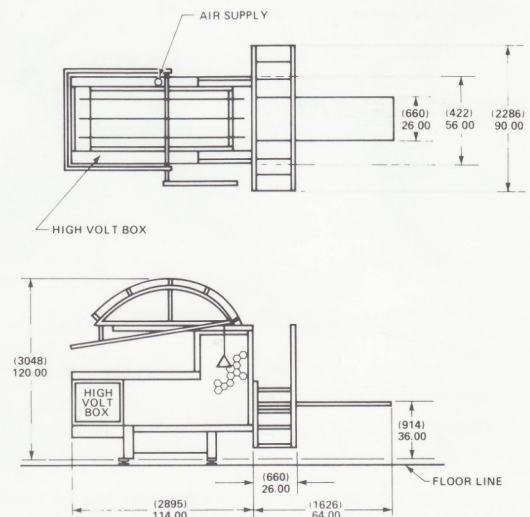
Related Equipment

- Under press scrap grinder
- Static eliminator
- Tooling

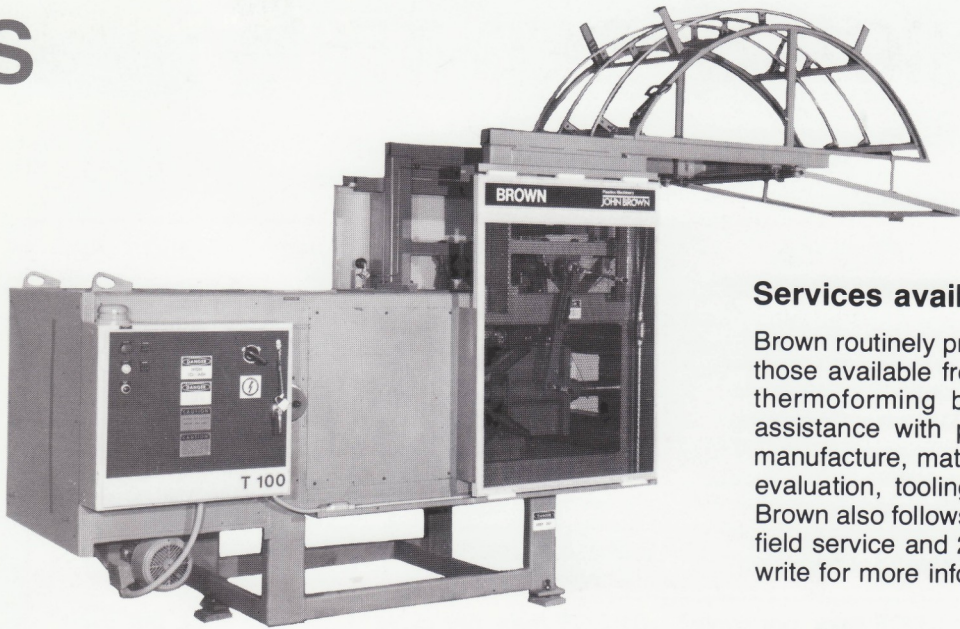
Optional Features

- DC drive
- Mechanical ejectors
- Car feed mechanism, with mechanical floating platen
- Double row trim parts tray
- Electrical control package for grinders
- Noise abatement package
- Product counting device
- International voltages available
- Spare parts kit
- Operator control on right hand
- Automatic parts handling
- Canopy nip feed
- Auto-feed adjustment
- Platen motion counterbalance
- Slow-speed, high-tonnage capability

THE T-100 TRIM PRESS



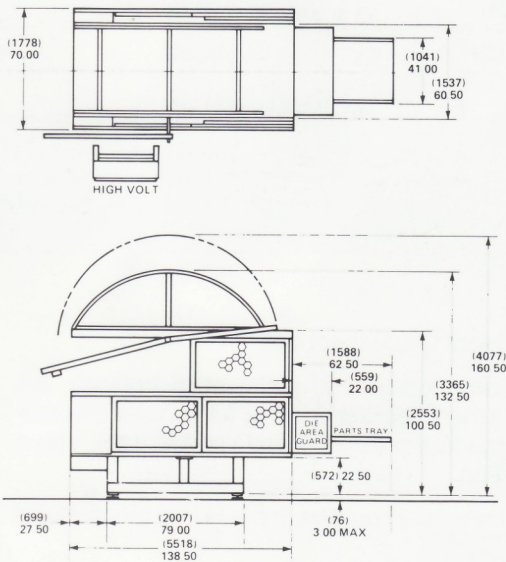
With a working capacity of 10 tons, the Brown T-100 trim press is ideal for trimming medium and small size plastic parts. It is designed as a companion to the Brown C-2100 continuous thermoformers, but works equally well with other thermoformers of similar size. The T-100 offers flexibility, with variable speed, feed and stroke. Maximum speed varies inversely with stroke, providing 120, 100, and 90 strokes per minute with strokes of 4½", 7½" and 10½" respectively.



Services available from Brown

Brown routinely provides services which go far beyond those available from other machinery suppliers in the thermoforming business. These services include assistance with product design, tooling design and manufacture, material selection, sample runs, product evaluation, tooling tryout and systems development. Brown also follows through with equipment installation, field service and 24-hour spare parts services. Call or write for more information.

THE T-300 TRIM PRESS



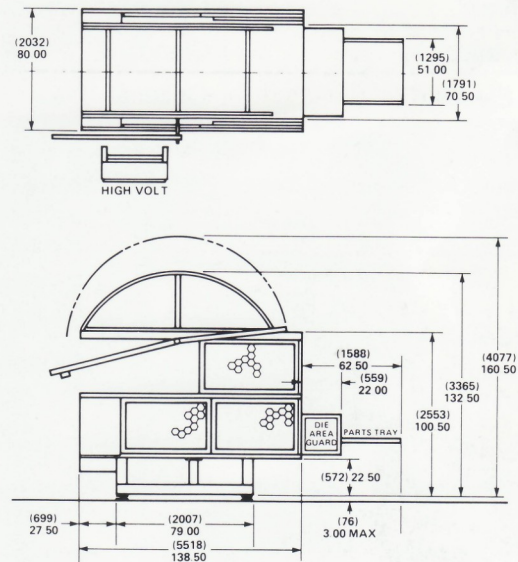
Rated at 30 tons, the Brown T-300 trim press is designed to trim small to medium sized parts in thicker and tougher materials. It is ideally suited to work in-line with Brown Machine's C-4200 sized thermoforming machines, or other machines of similar capacity.

The T-300 features welded tubular construction. Two flywheels and bushing housings are positioned out-board to accommodate double crank arms.

Spring loaded support pads are incorporated to support the weight of the moving platen to reduce tool maintenance.

Speed of press is variable up to 130 strokes per minute, depending upon machine stroke, product configuration and material specifications. Speed, feed, and stroke are adjustable.

THE T-350 TRIM PRESS



Mechanically the T-350 trim press is similar to the T-300 model but offers a wider platen opening to accommodate sheet widths up to 52". Its capacity is rated at 30 tons for trimming small, medium, or large plastic parts produced by the Brown C-4600 Series Continuous Thermoformers.

This unit utilizes the same rugged construction and double crank arms as the T-300. It also features the moving platen support system as a standard feature.

Speed of press is variable up to 130 strokes per minute, depending upon machine stroke, product configuration and material specifications. Speed, feed, and stroke are adjustable.

Specifications

	T-100	T-300	T-350
Adjustable Stroke	4½" (114mm) minimum 10½" (267mm) maximum	4½" (114mm) minimum 16½" (419mm) maximum	4½" (114mm) minimum 16½" (419mm) maximum
Stationary Platen Opening	12¼" x 25½" max. (311mm x 648mm)	12¼" x 40" max. (311mm x 1016mm)	16¼" x 50" max. (413mm x 1270mm)
Sheet Width (maximum)	27" (686mm)	42" (1067mm)	52" (1321mm)
Drive	5 hp. eddy current	7.5 hp eddy current	7.5 hp eddy current
Electrical (Standard)	3 phase, 60 hertz, 480 volts	3 phase, 60 hertz, 480 volts	3 phase, 60 hertz, 480 volts
Air Consumption @ 80 psi	.01 SCF max. per cycle*	.01 SCF max. per cycle*	.01 SCF max. per cycle*
Parts Tray	Single Row	Single Row	Single Row
KVA Rating	7.1 KVA	10.0 KVA	10.0 KVA
Average Operational KVA	4.0 KVA**	7.0 KVA**	7.0 KVA**
Spring Loaded Platen Support	—	Standard	Standard
Grinder Controls	Optional	Optional	Optional
Automatic Lubrication	Standard	Standard	Standard
Mechanical Ejection	Optional	Optional	Optional

*Does not include tooling **Usage depends on materials, trim, die, and cycle time.

WE RESERVE THE RIGHT TO AMEND THESE SPECIFICATIONS AT ANY TIME WITHOUT NOTICE.
THE ONLY WARRANTY APPLICABLE IS OUR STANDARD WRITTEN WARRANTY. WE MAKE NO OTHER WARRANTY, EXPRESSED OR IMPLIED.

SAFETY FEATURES

- Guards allowing high visibility are standard. Guards are in tracks and slide open and closed on the T-100, T-300 and T-350.
- Interlocks. Electrical interlocks are standard on moving guards of areas requiring frequent access.
- Safety Tags: Bilingual with pictographic tags are standard.
- Main Electrical Disconnect with padlock.
- Stop Buttons. Large red palm stop buttons are standard. When depressed, they lock in the off position and must be pulled up and rotated back into a reset position.
- All safety features should be in place and functional at all times.

Brown can assist with part design, material selection and build tooling with assured results. Maintenance personnel and stocked spare parts provide quick service when you need it.

Brown Machine Division
John Brown Plastics Machinery
330 North Ross Street
Ann Arbor, Michigan 48102 USA
TEL (617) 435-7741
TELEX 227405
TELEFAX (617) 435-2821

John Brown Inc.
Plastics Machinery Sales
P.O. Box 6055
Providence, Rhode Island 02940
TEL (401) 728-1600
TELEX PKET 927741
TELEFAX (401) 728-4734